

# INTO THE WOODS

JULY 10 - 25



## President's Report - Lizzie Matjacic

Late last year when our show selection committee met and we first thought about bringing into the Woods to the Fab Nobs stage, there was a ripple of excitement in the room. We knew that this ambitious and creatively challenging process would be hard work but also magical. Into the Woods lends itself beautifully to the intimacy of our factory space and we hope that you feel like you are in the woods with us during tonight's performance.

Behind tonight's performance is a team of incredibly dedicated and talented people who have worked tirelessly to bring this vision about and I would like to thank them most sincerely for their efforts. Here at Fab Nobs, we are a family and everyone contributes because we all feel passionate about bringing great theatre to the community. But there are certainly challenges in creating a seamless and professional show in our factory space and I think that our production team have done that tonight. I would like to thank our director Nicholas Kong for taking this baby and nurturing her to the beautiful grown up she has become. Nick has worked so hard on everything from the set, the creative vision and bringing the work to life with his exceptional direction, which has been wonderfully supported by Emma Hall who makes her debut with Fab Nobs on Into the Woods. Nick and Emma have made a wonderful team and we thank them for their outstanding work. And speaking of outstanding work, what an amazing job Sally McKenzie has done as our musical director extraordinaire. Sally has helped all of us in the cast navigate the musical maze that is a Sondheim musical and translated it beautifully to make it possible for us to create this beautiful and thought provoking music. Her guidance and musical expertise have made this show a joy to sing and play.

The production team have of course, also been supported by our army of behind the scenes helpers whom we cannot forget and without whom we could not be here. We would like to sincerely thank Colin Morely (production manager), Emily Hall (costumes), Vanessa Burke (lighting), Shawn Kleuh (sound) and Andrew Amos our stage manager for their wonderful work. And no less important are our committee and extended helpers who look after our venue, staff front of house and bar and brainstorm about how to help our company go from strength to strength year after year.

And last, but by no means least, thank you to you, our patrons. Without you, there would be no shows, no Fab Nobs and no magic. There are not enough superlatives in the English language that express how grateful we are for your support. So, come into the woods with us and let your wishes come true.

# INTO THE WOODS

Music and Lyrics by STEPHEN SONDHEIM

Book by JAMES LAPINE

Originally Directed on Broadway by James Lapine  
by arrangement with Hal Leonard Australia Pty Ltd  
Exclusive agent for MusicTheatre International (NY)

Original Broadway Production by

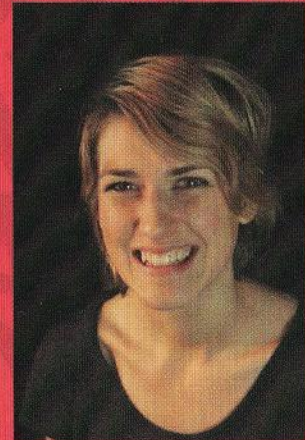
Heidi Landesman Rocco Landesman Rick Steiner  
M. Anthony Fisher Frederic H. Mayerson Jujamcyn Theaters  
Originally produced by The Old Globe Theatre, San Diego, Ca.

## Director/Set Design - Nicholas Kong



Nicholas is thrilled to be back directing for Fab Nobs having previously directed Next to Normal and A Little Night Music for the company. He has also directed Gypsy for Williamstown Musical Theatre Company. He is also a performer having appeared in many productions. For Fab Nobs, Those productions are: Reefer Madness (Jimmy), The 25th...Spelling Bee (Chip), Drowsy Chaperone (Adolfo) and [title of show] (Hunter). Currently Nicholas is performing in the Australian Tour of Anything Goes as John. The show is currently playing at the Princess Theatre in Melbourne and will then tour to Brisbane and Sydney. A big thanks to Sally, Emma and the Cast and Crew for making this a great show.

## Director - Emma Hall



Emma made her directorial debut with a production of Black Rock in 2008, and she has continued to be involved in theatre ever since in a variety of roles both on and off-stage. Some highlights have included devising and performing her own cabaret, Amanda Tucks, as part of the Melbourne Short and Sweet Festival, a performance art piece entitled Internal Life, and assistant direction of The Transfer Station as part of the 2015 Melbourne Fringe Festival. She looks forward to completing her theatre degree this year in London and is very grateful for the opportunity to work with the Fab Nobs family!

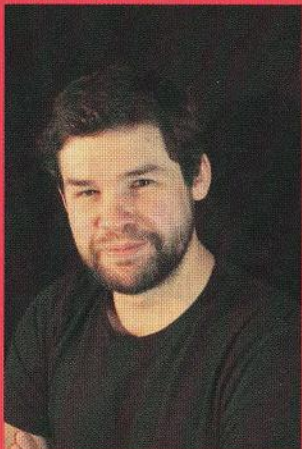
## Musical Director - Sally McKenzie



This is Sally's first time as Musical Director with Fab Nobs, although she has performed with us previously in Is There Life After High School and The First Five Years. For Sally, Into The Woods has been a long-time favourite musical. Over the past 20 years or so, Sally has musically directed a number of school musicals and amateur theatre musicals including Jesus Christ Superstar, The Wiz, West Side Story, South Pacific, Beauty and The Beast, The 25th Annual Putnam County Spelling Bee and Footloose. Her most recent projects have been Hairspray (CPAC 2013), Children of Eden (PEP 2014) and Ragtime (SPX Waterdale Players 2015). She has also enjoyed the performance side of theatre, which has included the roles of Katisha (Hot Mikado), Jane (Witches of Eastwick), Mimi Schwinn (A New Brain), The Witch (Into The Woods), and Mrs Lyons (Blood Brothers). After being a Fab Nobs fan for many years, Sally is delighted to be part of this fabulous production team and working with a cast of such high calibre.



## The Baker - Peter Garrett



Peter has been performing on stage for over a decade and has enjoyed many roles in both musicals and a broad variety of plays. After portraying the roles of Hamlet, Macbeth and Biff Loman in 2014 he made his return to musical theatre in February of this year as Emmett Forrest in CPACs production of Legally Blonde. He is very pleased and excited to be playing the Baker and has felt very privileged to have been a part of such a tight ensemble of talented actors. Into The Woods is a complex and layered show and there is almost never a still moment, so trust in your stage partners is of absolute importance and it's a great feeling to have such faith in your fellow actors. He hopes all the effort has paid off and that you enjoy the show!

## The Bakers Wife - Kat Elliott

Kat is thrilled to be back at Fab Nobs for her second show with a company she has long admired. Kat appeared as Blanche in Fab Nobs' 2014 production of Bonnie & Clyde, for which she was lucky enough to receive a Lyrebird Award for Best Supporting Actress in a Musical. Kat has previously appeared as Julia Sullivan in The Wedding Singer (Phoenix Theatre Company), Penelope Pennywise in Urinetown (Players Theatre Company) and Emma Goldman in Assassins (UMMTA). She was also featured as a soloist in the variety show Identity (Players Theatre Company). Just as deep as her passion for theatre is Kat's passion for her job as a social worker with Melbourne's inspiring and energetic young people.



## The Witch - Elizabeth Matjacie



Lizzie makes her second return to the Fab Nobs stage in 2015, and here third stage appearance for the year, following her appearance as our beautiful goddess of love, Erzulie, in Once On This Island and as Miss Adelaide in Guys and Dolls with Windmill Theatre Company. Her other stage credits include Lilli Vanessi/Kate in Kiss Me Kate, Domina in A Funny Thing Happened On The Way To The Forum, Sister Mary Amnesia in Nunsense, Woman 3 in Is There A Life After High School?, I Love You, You're Perfect, Now Change, Rona Peretti in The 25th Annual Putnam County Spelling Bee, Charlotte Malcolm in A Little Night Music, Diana Goodman in Next To Normal, Helen in Laughter On The 23rd Floor, and The Queen in Once Upon A Mattress. Lizzie has also enjoyed devising and performing in the solo and duo cabaret shows Spread A Little Joy (with Natasha Bassett), Heartaches, Hang-Ups and Headcases: A Psychologists Cabaret and From Here To Maternity at The Butterfly Club.

## Cinderella - Rachael Conway



Into the Woods marks Rachael's fourth appearance on the Fab Nobs stage. Her previous Fab Nobs credits include Mrs Nordstrom in A Little Night Music (2011), It's a bird...It's a Plane...It's Superman! (2013), and Urania in Xanadu (2014). She also co-produced Fab Nobs' June 2014 Fabaret season. Other stage credits include Nellie Collins in Floyd Collins with Octave Theatre (2011) and Meg March in Little Women with Nova (2010). In 2012 she appeared in Showfolk at The Butterfly Club with Natasha Bassett and Tyson Legg, which received a Green Room nomination. Rachael joined the committee for Fab Nobs in 2014 and became secretary in 2015. When she is not on stage, Rachael can be begrudgingly found at Swinburne University in the third year of her Professional Communication degree. She is thrilled to be back in the Fab Factory for another season!

## Jack - Owen James

Owen is 20 years old and is so excited to be performing with Fab Nobs after being in the audience for years. Involved in theatre throughout high school, since leaving he has been involved with original plays through What Just Happened Productions and Monash University Student Theatre, as well as Nuworks Theatre. Owen has played Angel in RENT (Nuworks 2013), and followed this up with the direction of Spring Awakening (Nuworks 2014). Owen works as a pianist and accompanist for theatre companies and schools throughout Melbourne.



## Stepmother - Bernadette Sheedy



Into The Woods is Stephanie's first production with Fab Nobs, and she couldn't be happier skipping into the role of Little Red Riding Hood! She feels spoilt performing two dream roles in one year: in January 2015, she portrayed Wednesday Addams in The Addams Family Musical with PLOS Musical Productions at the Frankston Arts Centre. Stephanie trained with the Young Australian Broadway Chorus (YABC) for eight years, and has also trained in jazz, tap and ballet. Her other performance credits include Spring Awakening (YABC), Jekyll and Hyde (ARC), 13 (Bustco), and Variety High (PEP Productions) for which Stephanie received a Lyrebird Award. She has also appeared in Winners and Losers (Channel 7) and Predestination (a Spierig Brothers' film). Stephanie would like to thank Fab Nobs and their production team for their hard work behind the scenes, and bringing these beloved fairytale stories to life!



# Musical Numbers

## Act One

Prologue (Act I)" – Company  
"Cinderella at the Grave" – Cinderella, Cinderella's Mother  
"Hello, Little Girl" – Wolf and Little Red Ridinghood  
"The Cow as White as Milk" – Baker and Baker's Wife  
"I Guess This is Goodbye" – Jack  
"Maybe They're Magic" – Baker and Baker's Wife  
"Maybe They're Magic (Reprise)" – Baker  
"I Know Things Now" – Little Red Ridinghood  
"A Very Nice Prince" – Cinderella and Baker's Wife  
"First Midnight" – Company  
"Giants in the Sky" – Jack  
"Agony" – Cinderella's Prince and Rapunzel's Prince  
"A Very Nice Prince (Reprise)" – Cinderella and Baker's Wife  
"It Takes Two" – Baker and Baker's Wife  
"Second Midnight" – Company  
"Stay with Me" – Rapunzel and Witch  
"On the Steps of the Palace" – Cinderella  
"Finale (Act I)" – Narrator and Company

## Act Two

"Prologue (Act II)" – Company  
"Agony" (Reprise) – Cinderella's Prince and Rapunzel's Prince  
"Witch's Lament" – Witch  
"Any Moment" – Cinderella's Prince and Baker's Wife  
"Moments in the Woods" – Baker's Wife  
"Your Fault" – Jack, Baker, Little Red Ridinghood, Witch and Cinderella  
"Last Midnight" – Witch  
"No More" – Baker and Mysterious Man  
"No One is Alone" – Cinderella, Baker, Little Red Ridinghood and Jack  
"Finale (Act II)" – Company

## Synopsis

"Be careful what you wish for" seems to be the ongoing theme in Stephen Sondheim and James Lapine's Brothers Grimm inspired musical, Into the Woods. The story follows The Baker and his wife who wish to have a child, Cinderella who wishes to go the King's Festival, and Jack who wishes his cow would give some milk. When the Baker and his wife are visited by the neighborhood witch, who reveals to them that she placed a curse on their family, the two set off on a journey into the woods to reverse the curse. Also in the woods, we meet Little Red, who is trying to visit her grandmother, the Wolf who loves tasty little girls, the Witch's daughter Rapunzel, and the Princes chasing after their loves. By the end of Act I, everyone has gotten their wish and will seemingly live happily ever after. But in Act II, when Jack's beanstalk brings them a visit from an angry Giant, we see how the consequences of their actions haunt them in disastrous ways. The community must come together to save each other and their kingdom, but sacrifices must be made.

# INTO THE WOODS



## Production Team

Production Manager - Colin Morely  
Directors – Nicholas Kong & Emma Hall  
Musical Director – Sally McKenzie

Set Design – Nicholas Kong  
Head of Set Construction – Ian Pucky  
Set/Prop Construction – Ian Pucky, Graham Andrew,  
Steven McKenzie, Nicholas Kong, Emma Hall, Owen  
James, Andrew Amos, Kathrine Elliot, Colin Morely,  
Shaun Klue  
Specialty Set – Steven McKenzie  
Costume Coordinator – Emily Hall  
Lighting Design – Vanessa Burke  
Sound Design – Shawn Klueh  
Sound Operator – Lindsay Owen  
Stage Manager – Andrew Amos  
Assistant Stage Manager – Tim Haughton  
Rapunzel Wig – Ang Cuy

Flyer/Program Design – Nicholas Kong  
Photography – Karl McNamara  
Program Coordinator – Colin Morley  
Box Office – Anne King  
Front of House – Kerry and Ian Pucky and Family and  
Friends of Fab Nobs

## Orchestra

Keys 1 – Lester Cheung  
Keys 2 – Rebecca McKeown  
Trumpet/French Horn – Christopher McLeod  
Clarinet/Flute – John Barber  
Violin – Paige Harvey  
Percussion – Gordon Hoxley

## Fab Nobs Committee 2015

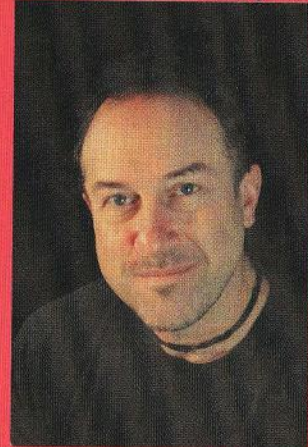
President – Lizzie Matjacic  
Vice President – Nicholas Kong  
Treasurer – Colin Morley  
Secretary – Rachael Conway  
General Committee:  
Rachael Conway, Lindsay Owen,  
Shawn Klueh and Graham Andrew  
Life Member – Leane Gooding

## A Big Thanks To The Following People:

Meaghan McKenzie, Karl McNamara, Ang Cuy, Latecha Cadle, Williamstown  
Musical Theatre, Karl McNamara, Glen Waverly Secondary Collage, Rosalind  
Surace, CLOC Musical Theatre, Melbourne Theatre Company, Steven  
McKenzie, Leane and Terry Gooding, Faux Pa Productions, Jessica Ogle and  
to the many friends and family of Fab Nobs.



## Narrator/Mysterious Man - Dean Snook



Dean's musical performances include the roles of George Dillingham in *Aspects of Love* (Guild Nomination), Judge Turpin and Pirelli in *Sweeney Todd*, MacDuff in *Macbeth: The Contemporary Rock Opera*, Javert, Enjolras and Jean Valjean in *Les Miserables* (MTGV Judges Award), Pharaoh in *Joseph...*, Pirate King in *The Pirates of Penzance* (Lyrebird nomination), Jesus and Judas in *Jesus Christ Superstar*, Miles Gloriosus in *Forum*, and Doctor Morpheus in his original musical, *Tower of Wow*. He has also appeared in operatic and comedic roles in productions of *La Belle Helene* (Ajax B), *Noises Off* (Gary LeJeune), *The Breakfast Club* (John Bender), *Arsenic and Old Lace* (Jonathon Brewster), *A Long Way Down* (Jim), *The Mathematician* (Math) and *The Remote* (Tim). As a director and musical/vocal director, his credits include *Little Shop of Horrors*, *Joseph* and the *Amazing Technicolour Dreamcoat*, *Fame*, *Guys and Dolls*, *Godspell*, and the 2014 Fab Nobs Fabaret showcase edition of *Tower Of Wow*.

## Cinderella's Prince/Wolf/Florinda - Douglas Costello

Douglas' original performance passion is as a singer/guitarist at various live music venues around Victoria and it was when he undertook the role of Treasurer at Amateur Repertoire Company (ARC) in Heidelberg that his interest in musical theatre took hold. His previous performance credits include *Miss Saigon* (Footlight Productions), *Roger* in *RENT* (Centrestage Geelong and UMTA), *Michael Hutchence* and *Jim Morrison* in *Tribute: A Rock Legend Review* (Altona City Theatre), *Melchior* in *Spring Awakening* (Altona City Theatre), *Hello Dolly* and *West Side Story* (both with ARC). Douglas is thrilled to be back at Fab Nobs after performing the role of Daniel in their first production of 2015, *Once on this Island*.

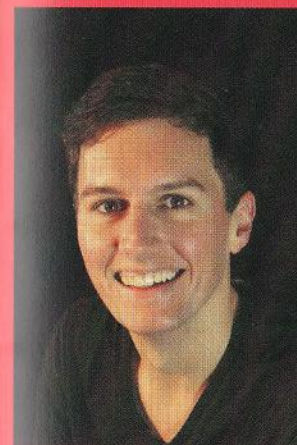


## Jack's Mother - Rebecca Gooley



Bec has had a passion for the stage for as long as she can remember, making "the big move" from country NSW to Melbourne to study Musical Theatre. Bec's stage roles include *Louise* in *It's All In The Timing* (Peridot Theatre Company), *Helene* in *Sweet Charity* (ARC), *Bricktop* in *Red Hot and Cole* (Edinburgh SMYCMS), *Sister Mary Leo* in *Nunsense* (Peridot Theatre Company), and *Rosemary* in *Bullshot Crummond* (The Basin Theatre Group), which earned Bec the Basin Theatre Group Judes Award for Best Actress in a Leading Role. Bec teaches early childhood music and singing at Forte School of Music, and every November she graces the stage as a Mermaid, Cowgirl or Fairy Princess in the School's annual pantomime! Bec hopes you enjoy the enchanting and dark comedy that is *Into the Woods*.

## Rapunzel's Prince/Lucinda - Curtis Mason



Hailing from Sydney's 'woods-like' Blue Mountains, this marks Curtis' first Fab Nobs production. After starring in productions of *HMS Pinafore* (2004) and *Oklahoma!* (2005) with Arndell College, Curtis turned to community theatre, playing Bruno in BAP's *Dear Charles* (2007). After a sell-out run of his self-penned cabaret, *I Can Sing* (2010), Curtis toured Sydney and Melbourne with his new cabaret *Big Time* (2011-2012). The role of Otto Lammermeier in *Spring Awakening* (2013) with Altona Community Theatre (ACT) marked Curtis' Melbourne musical theatre debut. He followed this up with the roles of Elvis and George Harrison in *Tribute* (2013) with ACT, Seth/Shem in *Children of Eden* (PEP Productions 2014), and the Younger Brother in *Ragtime* (SPX Waterdale Players 2015). Curtis thanks his family and friends for putting up with all the 'Agony' he may have caused them over the years...

## Steward/Cinderella's Father - Colin Morley

Colin has been a proud member of the Fab Nobs team since 2012 and has served on their committee since 2013. He includes amongst his performance highlights roles in *Six Dance Lessons In Six Weeks* (Michael Minetti), *Così* (Roy), *The Addams Family Musical* (Lurch), *The Tricky Part* (Martin Moran), *The Drowsy Chaperone* (Underling), *Urinetown* (Officer Lockstock), *Death Of A Salesman* (Bernard), *The Laramie Project* (Greg Pierotti et al), *Cabaret* (Clifford Bradshaw), *Waiting For Godot* (Estragon), *Sweeney Todd* (Jonas Fogg/ensemble), *Noises Off!* (Tim Allgood), and *Les Miserables* (Bomatabois/Grantaire). His production role highlights include the Direction and/or Costume Design for *Bonnie and Clyde*, *Are You Being Served?*, *Songs For a New World*, *Speaking In Tongues* and *A Midsummer Nights Dream*. He has been fortunate to receive recognition for both his performance and production roles with multiple nominations and awards from the Lyrebird Awards and the Victorian Drama League. *Into The Woods* has long been on his to-do list and he is thrilled to be part of this production with it's fabulous team and cast.



## Stepmother - Bernadette Sheedy



Bernadette was born and raised in Sydney, where she undertook singing and theatre training before moving to Melbourne in 2000. Whilst in Sydney, Bernadette performed the roles of Maria (*West Side Story*), Eliza Doolittle (*My Fair Lady*), and selections from *Jekyll and Hyde* and *Les Miserables* in various community college showcases. Recently, Bernadette has performed in *Jekyll and Hyde* (ARC), *Witches of Eastwick* (SPX Waterdale Players Inc), *The Sound of Music* (Players) and *The Phantom of the Opera* (Babirra). Earlier this year she played the role of Emma Goldman in *Ragtime* with SPX Waterdale Players Inc. By day, she is an English teacher and the Co-ordinator of Gifted and Talented Education at her school. Bernadette dedicates this performance to her beautiful daughter, Jessica.



## Rapunzel/Cinderella's Mother - Jacqueline Levitas



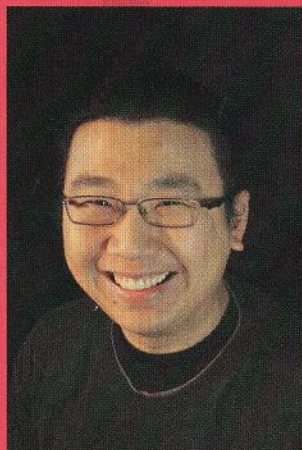
Jacqueline moved to Melbourne from Sydney in 2008 to study Music Theatre at the Victorian College of the Arts, and a Bachelor of Music (Classical Voice) at Melbourne University. Jacqueline's musical theatre credits include Olive Ostrovsky (The 25th Annual Putnam County Spelling Bee), Alexandra Spofford (Witches Of Eastwick), Cathy (The Last 5 Years), Lucy (13), Belle (Beauty and the Beast), Jo March (Little Women), Maria (West Side Story), Nancy (Oliver!), and Maria (The Sound of Music). She has also appeared in several concert/variety performances including Songs For A New World, SKIRTS: Battle of the Girl Groups, and I Hope I Get It! Jacqueline was nominated by the Music Theatre Guild of Victoria for her role in Little Women, and Lyrebird Awards for both this performance and her performance in SKIRTS: Battle of the Girl Groups. Jacqueline is very excited to be going Into The Woods with this magical cast and hard-working production team, and is excited to share how much she loves her hair with Rapunzel!

## Granny/Giant - Katie-Jane Kinsella

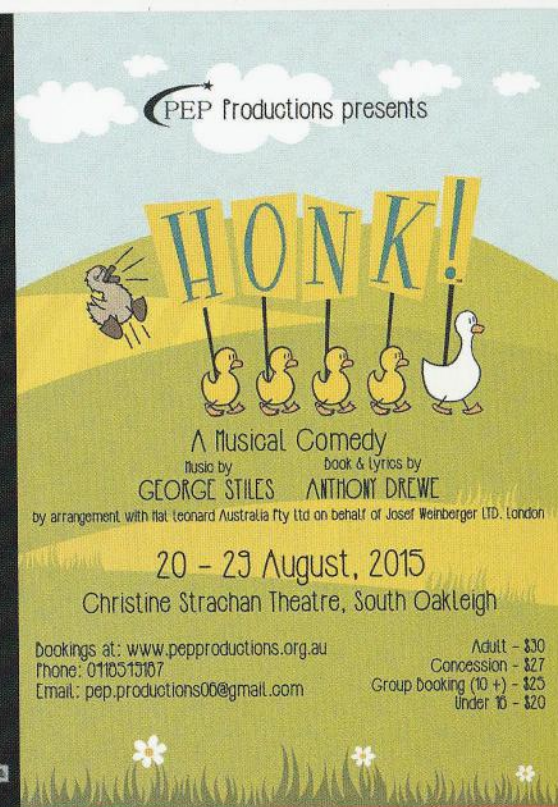
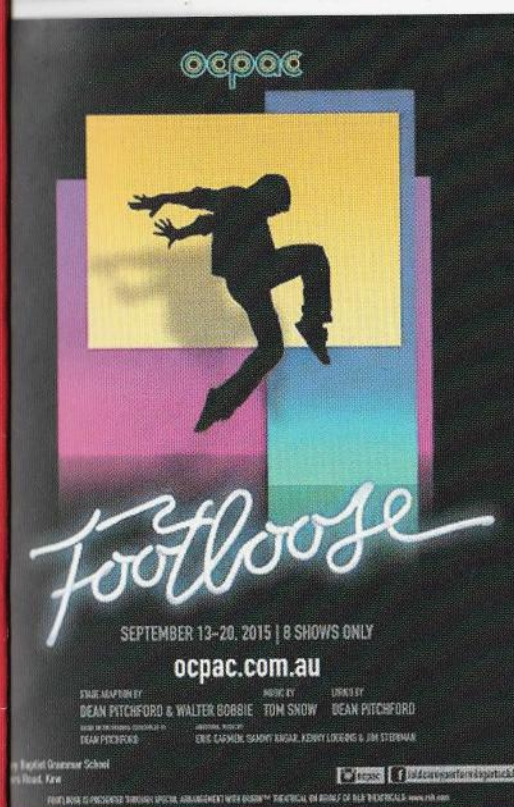
Katie-Jane makes her second return to the Fab Nobs stage following her appearance as Mama Euralie in our recent production of Once On This Island. Over the years she has worked both onstage and off with MDMS, Babirra, DTC and Lilydale Athenaeum, and some of her favourite roles have been Elizabeth Imbrie in A Philadelphia Story, Debbie in It's My Party, Calamity Jane in Calamity Jane, Erma in Anything Goes, Ado Annie in Oklahoma!, and Zelda in Fiddler On The Roof. By day, Katie-Jane is a Drama and English teacher at Luther College, where she has directed over 40 school productions. She loves sharing her passion for all things theatrical with her amazing and inspiring students and colleagues.



## Rehearsal Pianist - Lester Cheung



Lester is a passionate musician whose interests cross many genres. Graduating from Monash University with a Masters Degree in Classical Piano Performance, studying with Robert Chamberlain and Tamara Smolyar, Lester's passion for musicals has never faded since being introduced to "Les Miserables" by his high school piano teacher, Patrice Marshall. Recent performances include "Children of Eden" with PEP and "Ragtime" with Waterdale playing Keys 1. He is excited to team up with musical director Sally McKenzie again and perform this fantastic score, Into the Woods!



## Lighting Design - Vanessa Burke

Vanessa currently works at the Melbourne Convention and Exhibition Centre as a Technology Event Planner, allowing her to plan some of the world's largest medical and technical conferences. In her spare time, she devotes her AV experience and creativity to musical theatre.

She has always had a passion for musical theatre from a young age and found her way into lighting design in high school. Not one for the stage, she began her behind the scenes journey into the amateur theatre with Whitehorse's production of Beauty and the Beast in 2006. From there she has had various lighting roles with them in The Producers, Seussical, Footloose to name a few, and lastly Rent for which she was nominated by the Musical Theatre Guilds and won a Lyrebird Award for Best Lighting Design.

Her notable design credits with Fab Nobs include Zombie Prom, Reefer Madness, Next to Normal (Lyrebird Nomination), Drowsy Chaperone (Lyrebird Award Winner for Best Lighting Design), Title Of Show and Superman (Lyrebird Nomination). Bonnie and Clyde won her the Lyrebird Award for Best Lighting Design this year.

Other design productions were with Williamstown Musical Theatre Company, Gypsy in 2014 where she worked alongside Nick Kong, and most recently was Witches of Eastwick. She is thrilled to be lighting up another magical production with Fab Nobs. She would like to thank everyone to enjoy the show and thank them for supporting this



Fab  
Nobs  
THEATRE INC.

23rd of October to the 7th of November

# CARRIE

the musical

MUSIC BY MICHAEL GORE

LYRICS BY DEAN PITCHFORD

BOOK BY LAWRENCE D. COHEN

BASED ON THE NOVEL BY STEPHEN KING

For bookings call  
0401 018 846  
[www.fabnobstheatre.com.au](http://www.fabnobstheatre.com.au)

"CARRIE" IS PRESENTED BY PERMISSION OF ORIGIN™ THEATRICAL  
ON BEHALF OF R&H THEATRICALS; [WWW.RNH.COM](http://WWW.RNH.COM)