

Wish I were here...

NEED TO NORMAL

Fab
Nobs
THEATRE INC.

DIRECTORS NOTES

On the surface *Next to Normal* can be viewed as a drama that studies the effects of bipolar disorder on a mother and her family. The musicals view on drugs, grief and relationships is unflinching. However the most complex theme that is derived from the piece is that of love. Love has no boundaries, it draws people together and it also has the power to drive them apart. It is this multifaceted subject matter that makes *Next to Normal* one of the most compelling and raw modern music theatre pieces of our generation. When directing the shows heavy content, it is important to draw on the lighter comedic moments so as to make the show more accessible.

The modern score is, in one word, poignant. It creates a musical language that strives to find honesty and ultimately immerses you into the heart of the piece. Naomi Osborne is one of the most hardworking mothers I have met. Not only has she risen to the demands of the sung-through score and complex harmonies, she also has 6 month old twins at home! A super mum if there ever was one.

Next to Normal is a chamber piece and a perfect fit for Fab Nobs. I am extremely thankful to the company for taking on this show and for asking me back as a director. Particular mention must go to our stage manager Sarah Somers who has worked tirelessly behind the scenes organising advertising and all the odds and ends I conveniently forget about! The cast are the nicest people I have ever had to work with, free of ego and keen on creating a 'whole'. Not to mention that they are some of the best actors and singers in amateur theatre. Danny Mathews is far more than our 'set builder', he became a mentor to me and deftly and professionally handled all my questions and requests!

Finally to my beautiful friend and production manager Elly Foster, your dedication and your support is and was unwavering. Your tears a sign that we were/are doing a good job! Mental illness aside, *Next to Normal* is a piece about how an everyday family loves and lives with one another. The show is raw and I consider it to be one of the most exhilarating theatrical pieces of our day.

Nick Kong



CAST

Lizzie Matjacic

Jonathan Guthrie – Jones

Kate Warner

Matt Allen

Robbie Medica

Tony Burge

Diana

Dan

Natalie

Henry

Gabe

Dr Madden/ Dr Fine

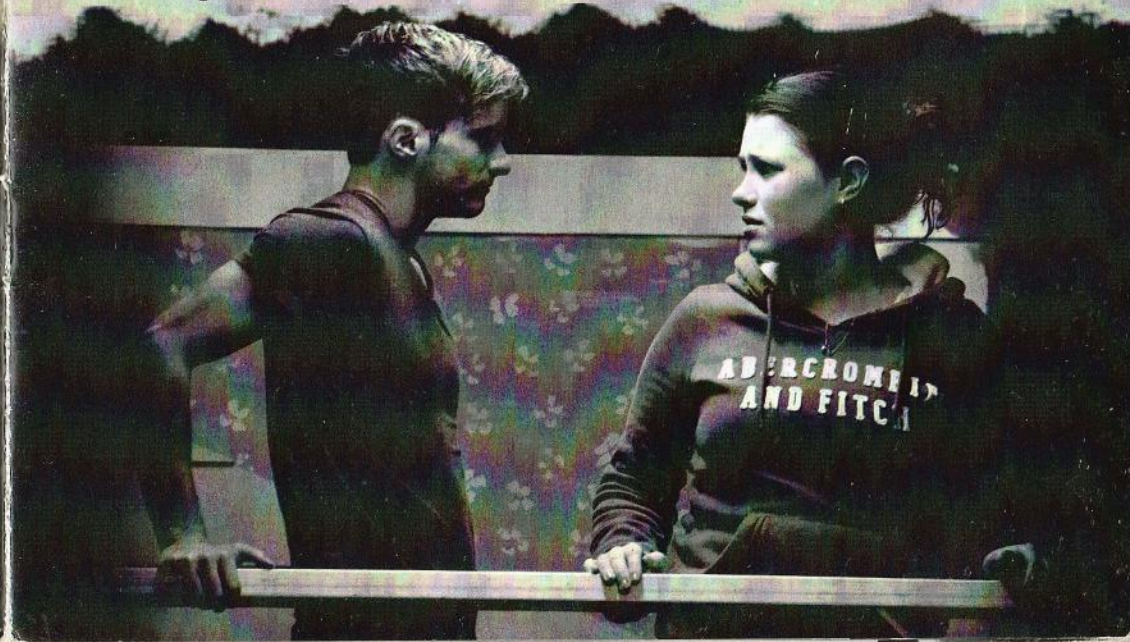


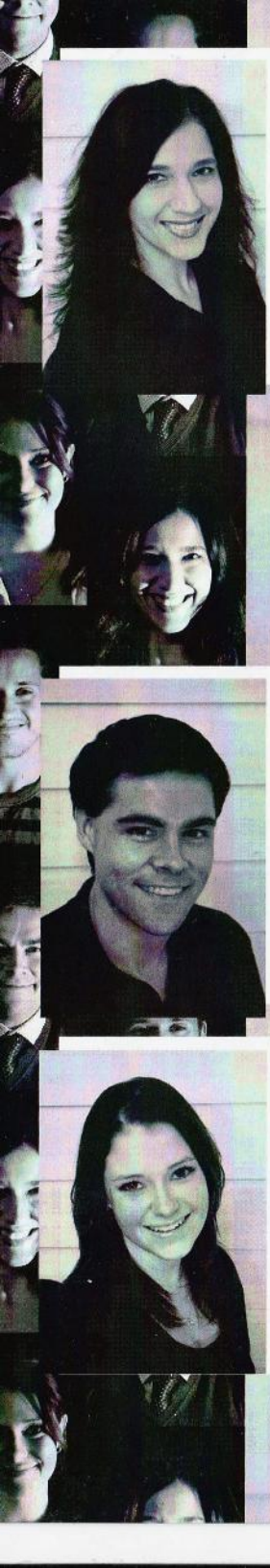
PRESIDENT'S REPORT Welcome to Fab Nobs production of *Next to Normal*, definitely a different show for us to stage and although it addresses many very difficult issues I am sure you will feel uplifted when you leave here tonight. We are very privileged to have Nick Kong direct for us once again and he has teamed up with the very talented Naomi Osborne our Musical Director. These two have worked so well together to bring you this beautiful and poignant show. Nick and Naomi have assembled an amazing and talented cast, they have worked so hard and Fab Nobs are very proud to have them on our stage.

Thanks must go to Elly Foster, Production Manager and Sarah Somers, Stage Manager for their many hours of hard work- picking up many extra duties in my absence. Special mention must go to Sarah Somers who has also spent many hours promoting and advertising the show on a nil budget and to the wonderful Karl McNamara who continues to be so supportive to Fab Nobs. Thanks also go to Danny Matthews who has almost single-handedly built the gorgeous set designed by Nick Kong. 10 years are up for Fab Nobs so we are staging a two day concert 'The 10th FABIVERSARY Concert' on the 3rd and 4th of August - to be directed by Sarah Somers and musically directed by Danny Forward - this will be a fun night highlighting the most memorable songs from all our past shows.

In November we will be bringing you the hilarious 'The Drowsy Chaperone' to be directed by Karl McNamara and musically directed by Vicki Barden. Hope to catch you at the bar

Leane Gooding





Lizzie Matjacic – DIANA

Lizzie's love affair with theatre began in 1993 and since then, she has performed in a wide variety of shows. Favourites include Josephine in 'HMS Pinafore' (Lyrebird award); Mabel in 'Pirates of Penzance'; the Teacher in 'Working' and Lilli Vanessi/Kate in 'Kiss me Kate'. Lizzie has especially loved treading the boards with Fab Nobs performing roles in 'A Funny Thing Happened on the Way to the Forum' (Domina), 'Nunsense' (Sister Mary Amnesia); 'Is there a Life After High School?' (Woman 3); 'Honk!' (Ida); 'Spelling Bee' (Rona), and 'A Little Night Music' (Charlotte). In recent years, Lizzie has enjoyed performing at Chapel of Chapel in 'I Love You, You're Perfect, Now Change', 'Is there Life after High School?' and in the two woman show 'Spread a little Joy' which she co-wrote and performed with Natasha Bassett. Lizzie has also written and performed in her own one woman cabarets 'Heartaches, Hang-ups and Headcases: A Psychologists Cabaret' and 'From Here to Maternity' at the Butterfly Club. The Butterfly Club also saw Lizzie "gothed up" to perform in the "choose your own ending murder mystery" cabaret show 'In the Dead of Night: A Cult Show'. Lizzie is honoured to be back on stage with Fab Nobs again and especially performing such a wonderful role. As a psychologist in "real life", she has enjoyed the challenge of sitting in the other chair and portraying the experience of living with a mental illness and hopes that you will be entertained, moved and inspired by this amazing show too.

Jonathan Guthrie-Jones – DAN

Jonathan is thrilled to be back in the Fab Factory after appearing as Carl-Magnus in last November's production of 'A Little Night Music'. Past performances include 'Me & My Girl' (Bill), 'Anything Goes' (Billy), 'Singin' In The Rain' (Don), 'Annie' (Rooster), 'How To Succeed...' (Finch), 'Hot Mikado' (Koko), 'Jesus Christ Superstar' (Pilate) and 'The Witches of Eastwick' (Darryl). Jonathan has also performed in both original and return seasons of 'I Love You, You're Perfect, Now Change' and the Australian premiere of 'Tomorrow Morning'. Jonathan was lucky enough to spend a year on the stage at Tokyo Disneyland.

Kate Warner – NATALIE

Kate is thrilled to be returning to the Fab Nobs stage following her role as Assistant Director for 'Avenue Q' earlier this year and her performance as Olive in 'Spelling Bee' last year. Previous to this, Kate played Kate Monster in SLAMS production of 'Avenue Q' in 2011, for which she was nominated for a Lyrebird award for "Best Actress in a Musical". Kate has enjoyed working with numerous theatre companies over the years including CLOC, 'High Society' - Peg, Players 'Wizard of Oz' - Dorothy, SHOOH! Productions 'Bare' and Babirra 'Annie Get Your Gun' - Winnie. She has also performed in concerts such as SLAMS' 'The Past 5 Years' and Phoenix Theatre Company's 'All The New Stuff' and was Assistant Director of BUSTCO's Platform. By day, Kate is a primary school performing arts teacher. Kate would like to thank her family and friends for their ongoing support.

Robbie Medica – GABE

Robbie caught the music theatre bug at the age of 16, when he first quit swimming and starred as Ponyboy in 'The Outsiders' (Phoenix Theatre). Since then, performing has been his greatest passion and he has been involved in many shows and played roles such as Danny Zuko in 'Grease', and Troy Bolton in 'High School Musical'. Robbie has previously appeared on the Fab Nobs stage in 'RENT' and as Georg Zirschnitz in 'Spring Awakening'. He is extremely excited to be playing the role of Gabe in Next to Normal, and hopes you all love the show.

Matt Allen – HENRY

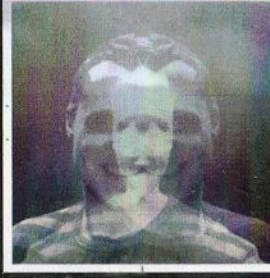
Matt's passion for music theatre started when he began singing lessons at Centerstage Performing Arts School, whilst in year 11 at St. Bernards College under Peter McKay and John Lander. At St. Bernard's Matt completed Unit 3 and 4 in Music Performance and was a member of the vocal ensemble. After further training at Centerstage, Matt completed the musical theatre course 'Showfit', showcasing the year at the Malthouse theatre and also performing in Hats Off at the National Theatre and South Street in Ballarat. Matt appeared in his first show last year with OCarts' 'Urinetown' and is extremely privileged and excited to be performing in Next to Normal with Fab Nobs. Matt thanks his family and friends for their constant support and encouragement, his excessively talented cast mates and production team for this amazing experience, and hopes you enjoy this terrific show!!

Tony Burge – DR MADDEN / DR FINE

Clearly cast because of his rock star good looks, Tony finds himself the only actor playing dual roles in a show about bi-polar - Hmmm interesting - not sure what to make of that. Other shows in which Tony has played multiple characters are: 'Me and My Girl' where he played Parchester and the Policeman; 'Oliver!' - Mr Sowerberry and Dr Grimwig; the most multiple of them all Man 4 in 'Is There Life After High School?'; and finally Ambrose Kemper and the Policeman in 'Hello Dolly', although these last two were 5 years apart. Tony recently enjoyed a successful directorial debut with Fab Nobs previous production of 'Avenue Q'. He was quite proud of it actually, not that he would tell you that himself - he's too humble! If you would like to "get it on" with Tony, please leave your details at the bar after the show. He promises they won't find their way into the Fab Nobs mailing list.



ACT ONE
 Prelude (Light)
 Just Another Day
 Everything Else
 Who's Crazy
 My Psychopharmacologist and I
 Perfect for You
 I Miss the Mountains
 It's Gonna Be Good
 He's Not Here
 You Don't Know
 I Am the One
 Superboy and the Invisible Girl
 I'm Alive
 Make Up Your Mind
 Catch Me I'm Falling
 I Dreamed a Dance
 There's a World
 I've Been
 Didn't I See This Movie?
 A Light in the Dark



ACT TWO
 Wish I Were Here
 Song of Forgetting
 Hey #1
 Seconds and Years
 Better Than Before
 Aftershocks
 Hey #2
 You Don't Know (Reprise)
 How Could I Ever Forget?
 It's Gonna Be Good (Reprise)
 Why Stay?
 A Promise
 I'm Alive (Reprise)
 The Break
 Make Up Your Mind
 Maybe
 Hey #3 / Perfect for You (Reprise)
 So Anyway
 I Am the One (Reprise)
 Light

BAND
 Keys 1 Danny Forward
 Christine Munro
 Synth / Violin Jenny Stokes
 Christine Munro
 Cello Andrea Scarlett
 Bass Bill Clarke
 Percussion Louis Sharpe
 Guitar Mark George

Nicholas Kong - DIRECTOR

Nick has studied Classical Voice at the Conservatorium of Music, Melbourne University and has been performing for many years. Nick's claim to fame is working in the Australian professional production of 'Spring Awakening' (Sydney Theatre Company) in which he performed the role of Otto and Hanshen. Most recently, Nick played Jacob in Quirky Productions 'La Cage Aux Folles'. Previously to this Nick performed in The Production Company's, 'Kismet' and he also starred in the Australian premiere productions of 'Bare', in the lead role of Peter, and Laciusa's 'The Wild Party' as Phil. After featuring in Magnormos' OzMade Musicals 2007, Nick went on to play the role of Jamie in their production of Nick Enright's 'Mary Bryant'. Other roles include Mereb in 'Aida', Jimmy in 'Reefer Madness', Freddy in 'Dirty Rotten Scoundrels', 'Putting it Together', 'Assassins' and 'Songs for a New World'. Nick has appeared on Sunrise for the Seven network and performed in many varieties and concerts. Nick is thrilled to be directing for Fab Nobs again after directing 'A Little Night Music' for them last year and is extremely thankful for this opportunity.

Naomi Osborne - MUSICAL DIRECTOR

It is with delight that Naomi returns to Fab Nobs after a long hiatus. Her performance experience includes the English National Opera, Opera Australia, 'The Blackened Pearl' (Melbourne Uni.), 'The Sound of Music' (Frost), 'South Pacific' (Production Company), 'The Gondoliers', 'Camelot' (Babirra), 'Chess' (Nova) 'Paris' (Stella Entertainment), 'Merrily We Roll Along' (Devanesen Productions), 'Assassins' (Nightowl), 'The Scarlet Pimpernel' (CLOC), and 'CATS' (CLOC and PLOS). Naomi was educated at the Royal Academy of Music in London and the University of Melbourne (Voice and Violin) where she completed a Masters of Music in Conducting. Naomi's musical directing experience includes 'Clue: The Musical', (Fab Nobs), 'Bugsy Malone' (Caulfield Grammar), 'Calamity Jane', 'The Pajama Game', (Babirra), 'The Musical of Musicals', (SHooSH!) and is currently vocal coaching 'Hello Dolly' (Babirra). Active as a violinist in various orchestra pits and the Guild Awards, Naomi has also worked as a vocal coach throughout many schools and theatre companies including 'West Side Story', 'Man of La Mancha', 'Pirates of Penzance', 'Jesus Christ Superstar', 'The Merry Widow' and for the professional season of 'The Producers'. Naomi would like to thank her husband, Cam for his outstanding support with their 6 month old twin girls.

Elly Foster - PRODUCTION MANAGER

This is Elly's first gig with Fab Nobs, in a role that she has previously undertaken many times with Catchment Players and recently with SHooSH! Productions. Although an unenviable task trying to step into the shoes of Leane Gooding, it has been an absolute joy to see the production emerge from the note bashing at the first rehearsal into the polished performance you will enjoy tonight. She is extremely proud of each and every one of the very talented cast. They have been so committed and dedicated, and have worked diligently throughout the entire rehearsal period. She is in awe of the direction team of Nick Kong and Naomi Osborne. They have both been amazing - so incredibly hard working, displaying patience, good humour, respect and also making the experience lots of fun for everyone. She thanks each and every person who has contributed to the success of this show, to the Fab Nobs committee for their faith and confidence in offering her the role, and finally to Simon - thank you - you are a treasure!

Vanessa Burke - LIGHTING DESIGN

Vanessa is no stranger to Fab Nobs, whether designing, operating or being an audience member, she has been a dedicated fan for the last five years. Over this time she has had so many amazing friendships and awesome experiences that evolved from her first show. 'Zombie Prom' marked her first design in the factory, followed by 'Reefer Madness' and now 'Next to Normal'. Vanessa looks back and thinks that these shows all have a quirk about them that makes them that extra special and immensely enjoyable to be part of. She would like to thank all the people who have supported and assisted her and thanks to the Fab Nobs Committee for allowing her the opportunity to work with them.

Shawn Klueh - SOUND DESIGN

Shawn started theatrical design in grade school along with preliminary engineering studies and has been resident tech at various theatres and venues throughout the past 25 years. He arrived in Australia in 1995 and is working as an Engineering Support Manager and currently employed with numerous companies around Australia, staging major concerts and productions. Other venues he currently works are Rod Laver Arena, Hisense Arena, Her Majesty's Theatre, Regent Theatre and the Palais Theatre, working mainly with 'live' sound engineering and monitor operation.

Sarah Somers - STAGE MANAGER

Sarah Somers studied Opera at The Victorian College of the Arts (VCA), and is usually seen onstage; most recently as Christmas Eve in 'Avenue Q' (Fab Nobs) and as Sonia Walsk in 'They're Playing our Song' (Lilydale Theatre Company) for which she received a Lyrebird Nomination for Best Actress. For this production however, Sarah has chosen cross to the "dark side" and support the cast as Stage Manager; an opportunity to add to her other non-performance related roles, which have included Costume Design, Choreography and Directing. Sarah is thrilled to be supporting such a talented cast for this production.

Fab Nobs is a proud member of



**MUSIC THEATRE
GUILD OF VICTORIA**



**LYREBIRD
AWARDS INC**

PRODUCTION TEAM

Director Nick Kong
Musical Director Naomi Osborne
Production Manager Elly Foster
Stage Manager Sarah Somers
Crew Hamish Anderson
Karlie Gooding
Rachel Juhasz
Warren Dodd
Michael Butler
Nick Kong
Vanessa Burke
Danny Issko
Vanessa Burke
Shawn Klueh
Karl McNamara

Dressers Leane Gooding
Kerryn Puckey
Kathy Lang
Danny Matthews
Karl McNamara
Shing Hei Ho
Karl McNamara
Sarah Somers
Nick Kong
Karl McNamara
Adeline Han
Danny Forward
Christine Munro
Lucy O'Brien
Kerryn Puckey
Friends of Fab Nobs

Properties
Set Builder
Program
Flyer Design
Photography
Marketing & Publicity
Video/AV Design

Rehearsal Pianists

FOH Manager
FOH Team

ACKNOWLEDGEMENTS

Melbourne Observer
Leader Newspapers
3AW
The Fab Nobs Committee
Danny Matthews
Cameron Osborne
Stockdale & Leggo
Sarah Somers
Warren Dodd
Theatre People
Stage Whispers
Peridot Theatre
Joseph Van Rooy
Liz Jenes

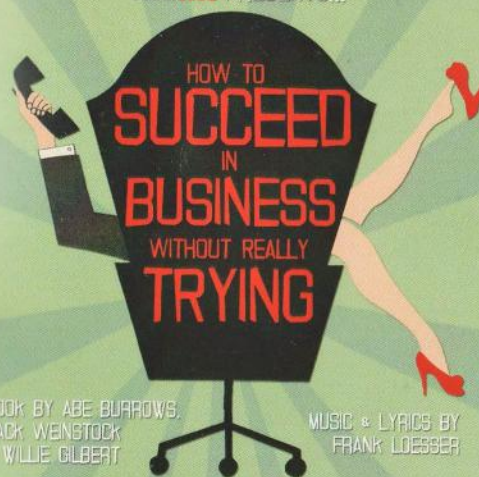
Hamish Anderson
Gemma Foster
Graham Andrew
BAAC Light
Simon Foster
Joanne Kiker
David Sly
Phil Hausler
The Sign & Badge Centre – Bayswater
Glen Waverley Hawks
Danny Forward
Karl McNamara
Terry Gooding

“Next To Normal”
Music by Tom Kitt
Book and Lyrics by Brian Yorkey

Original Broadway Production Produced by David Stone, James L. Nederlander, Barbara Whittman, Patrick Catullo and Second Stage Theatre

“Next to Normal” is presented through special arrangement with Hal Leonard Australia Pty Ltd on behalf of Music Theatre International

mdms PRESENTS...



BOOK BY ABE BURROWS,
JACK WEINSTOCK
& WILLIE GILBERT

MUSIC & LYRICS BY
FRANK LOESSER

BASED UPON THE BOOK BY SHEPHERD MEAD
ORIGINALLY PRESENTED BY CY FEILER & ERNEST H. MARTIN IN ASSOCIATION WITH FRANK PRODUCTIONS
BY ARRANGEMENT WITH HAL LEONARD AUSTRALIA PTY LTD
EXCLUSIVE AGENT FOR MUSIC THEATRE INTERNATIONAL (NY)

KARRALYKA THEATRE, MINES RD RINGWOOD

MUSICAL DIRECTOR: GLEN BARNETT
CHOREOGRAPHER: FELICITY BENDER
DIRECTOR: RICHARD PERDRIAU

15 - 23 JUNE

BOOK TICKETS ONLINE: WWW.TRYBOOKING.COM/BBGV

WWW.MDMS.ORG.AU

FIND US ON FACEBOOK! FOLLOW US ON TWITTER!

FAB NOBS

10th

FABIVERSARY CONCERT

August 3rd & 4th
@ The Fab Factory

Hello, DOLLY!
Book by Michael Stewart
Music & Lyrics by Jerry Herman
12 - 20 October
Whitehorse Centre,
Nunawading

Ticket Bookings: 9262 6555
www.babirra.org.au

Based on the Play "The Matchmaker" by Thornton Wilder
Original Production Directed and Choreographed by Gower Champion
Produced for the Broadway Stage by David Merrick & Champion-Five, Inc.

GREASE

IT'S THE MOST ELECTRIFYIN'
EXTRAVAGANZA on stage!...

Friday 8th June, 8pm , Saturday 9th June, 8pm
Friday 15th June, 8pm , Saturday 16th June, 2pm
Saturday 16th June, 8pm , Friday 22nd June, 8pm
Saturday 23rd June, 8pm , Sunday 24th June, 2pm

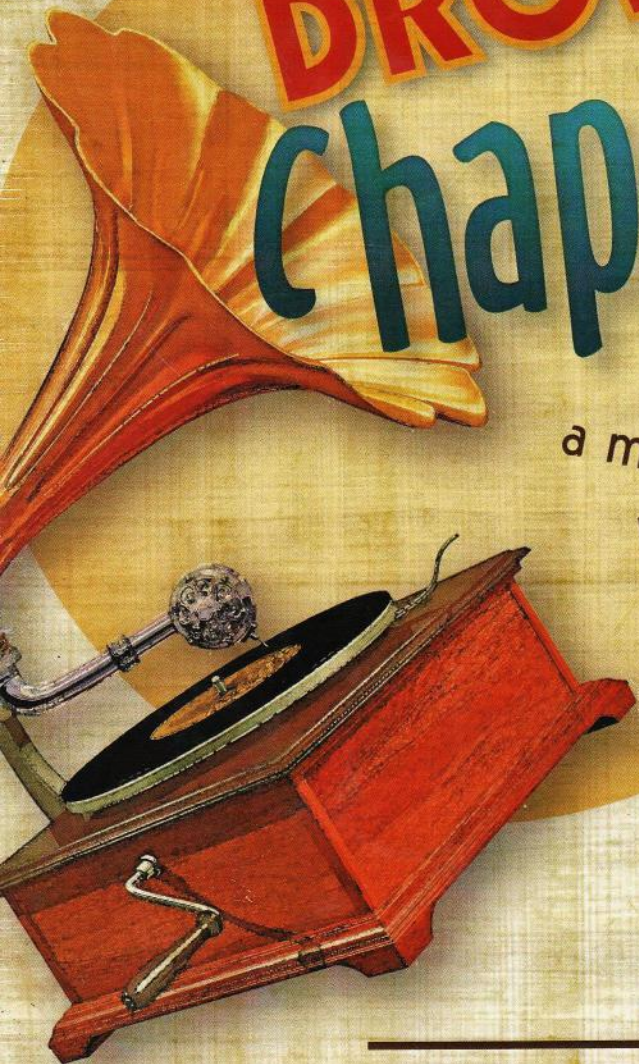
Drum Theatre
Cnr Lonsdale & Walker Streets, Dandenong

BOOKINGS 9771 6666
Book Online @ drumtheatre.com.au

She's on her way to FAB NOBS in November

the
DROWSY
Chaperone

a musical
within a comedy



AUDITIONS 28 - 29th JULY 2012

Director
Karl McNamara

Fab
Nobs

Musical Director
Vicki Barden